



Figure 41. *Hoolock hoolock* (western hoolock) adult female “Alfa”,GCC. Photo by Alan Mootnick.



Figure 42. *Hoolock hoolock* (western hoolock) adult female “Alfa”, GCC. Photo by Alan Mootnick.



Figure 43. *Hoolock leuconedys* (eastern hoolock) adult male “Arthur” and adult female “Betty”, GCC. Photo by Erin Bell.



Figure 44. *Hoolock leuconedys* (eastern hoolock) adult male “Arthur” and adult female “Betty”, GCC. Photo by Erin Bell.



Figure 45. *Hoolock leuconedys* (eastern hoolock) adult female “Drew”, GCC. Photo by Erin Bell.



Figure 46. *Hoolock leuconedys* (eastern hoolock) juvenile female left “Drew”, juvenile male right “Chester”, GCC. Photo by Alan Mootnick.



Figure 47. *Hylobates klossii* (Kloss' gibbon) adult female, Lion County Safari, California. Photo by staff photographer.

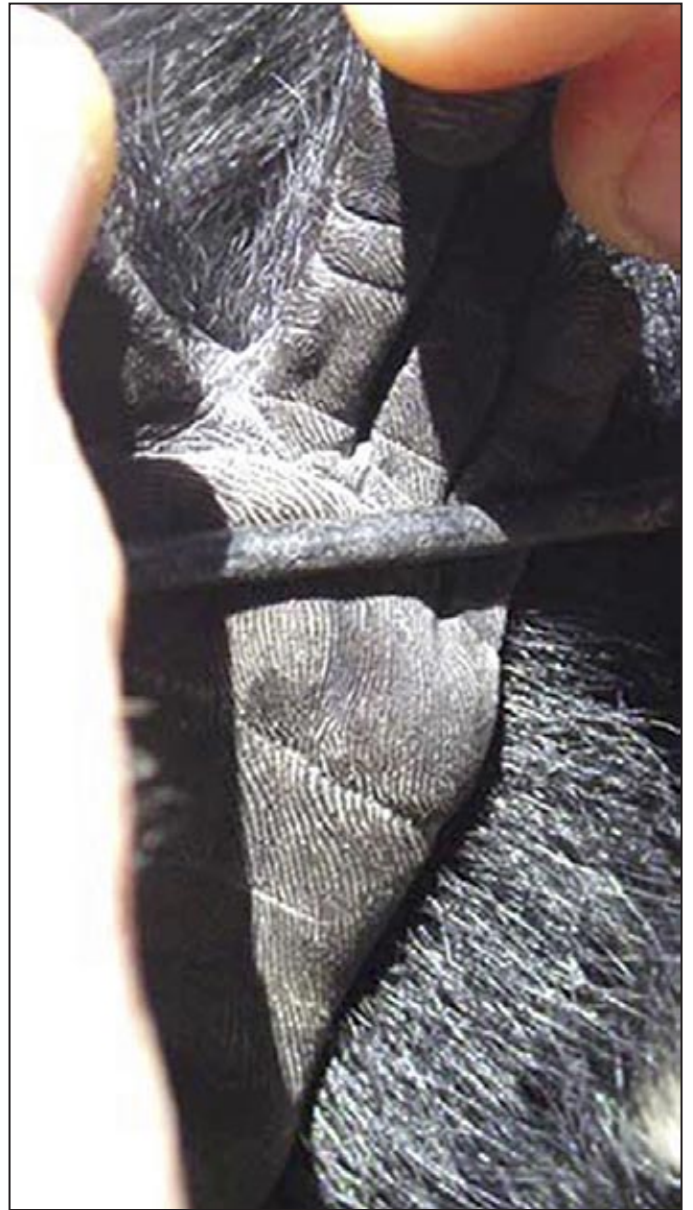


Figure 48. *Hylobates klossii* (Kloss' gibbon) female “Nanam”, Gibbon Foundation, Indonesia. Slight interdigital webbing between the second and third digits. Photo by David Broadhurst.



Figure 49. *Hylobates klossii* (Kloss' gibbon) infant, South Pagai. Photo by Richard Tenaza.



Figure 51. *Hylobates pileatus* (pileated gibbon) adult male "Birute", GCC. Photo by Alan Mootnick.



Figure 50. *Hylobates klossii* (Kloss' gibbon) 8 yr old female "Nanam", Gibbon Foundation, Indonesia. Photo by Micca Rogers.



Figure 52. *Hylobates pileatus* (pileated gibbon) 52 month old female "Kana-ko", GCC. Photo by Erin Bell.



Figure 53. *Hylobates pileatus* (pileated gibbon) adult female “JR” in first trimester, 23 month old male “Truman”, GCC. Photo by Erin Bell.



Figure 55. *Hylobates pileatus* (pileated gibbon) adult female “Tuk”, GCC. Photo by Erin Bell.



Figure 54. *Hylobates pileatus* (pileated gibbon) adult female “JR”, 1 day old female “Jitka”, GCC. Photo by Erin Bell.



Figure 56. *Hylobates pileatus* (pileated gibbon) adult female “JR”, 32 month old male “Truman”, GCC. Photo by Erin Bell.



Figure 57. *Hylobates pileatus* (pileated gibbon) 4 yr 6 mo male “Kokopelli”, GCC. Photo by Alan Mootnick.



Figure 58. *Hylobates pileatus* (pileated gibbon) 5 year 7 month old male “Mateas Binti”, GCC. Photo by Erin Bell.



Figure 59. *Hylobates moloch* (Javan gibbon) adult female “Chloe”, 1 day old male “Lionel”, GCC. Photo by Alan Mootnick.



Figure 60. *Hylobates moloch* (Javan gibbon) adult male “Chilibi”, GCC. Photo by Suzanne Kokel.



Figure 61. *Hylobates moloch* (Javan gibbon) adult female “Chloe”, 6 month old male “Reg”, GCC. Photo by Alan Mootnick.



Figure 64. *Hylobates m. muelleri* (eastern Müller's gibbon) subadult male, Taman Safari, Indonesia. Photo by Alan Mootnick.



Figure 62. *Hylobates moloch* (Javan gibbon) 3 yr old male “Lionel”, 6 year 10 month old male “Isaac”, GCC. Photo by Clare Cunningham.



Figure 63. *Hylobates m. muelleri* (eastern Müller's gibbon) adult female “Dongkey”, 1.5 month old infant, Kalaweit. Photo by Wandy.



Figure 65. *Hylobates muelleri funereus* (northern Müller's gibbon) adult female “Abbey”, GCC. Photo by Alan Mootnick.



Figure 66. *Hylobates muelleri abbotti* (Abbott's Müller's gibbon) adult female and infant, Singapore Zoo. Photo by Roland Wirth.



Figure 67. *Hylobates muelleri abbotti* (Abbott's Müller's gibbon) adult male "Hylo", Edinburgh Zoo, Great Britain. Photo by Elliott Haimoff.



Figure 68. *Hylobates agilis* (agile gibbon) adult female and infant, Singapore Zoo. Photo by staff photographer.



Figure 69. *Hylobates a. agilis* (mountain agile gibbon) juvenile female "Ruby Baby", GCC. Photo by Alan Mootnick.



Figure 70. *Hylobates a. agilis* (mountain agile gibbon) 12 year 4 month old female “Ruby Baby” and 6 day old male “Milton”, GCC. Photo by Donald Johanson.



Figure 71. *Hylobates a. agilis* (mountain agile gibbon) adult male “Bebopen Baby”, GCC. Photo by John Williams.



Figure 72. *Hylobates a. agilis* (mountain agile gibbon) adult male “Sonny”, GCC. Photo by Suzanne Kokel.



Figure 73. *Hylobates a. agilis* (mountain agile gibbon) adult female “Mumma” and infant male “Albert”, GCC. Photo by Shawn Tanaka.



Figure 74. *Hylobates agilis unko* (lowland agile gibbon) adult male “Homer”, GCC. Photo by Alan Mootnick.



Figure 76. *Hylobates lar* (lar gibbon) (brown color phase) 15 month old female “Princess”, Cleveland Amory’s Black Beauty Ranch, Texas. Photo by Lee Theisen-Watt.



Figure 75. *Hylobates albibarbis* (white-bearded gibbon) adult female “Jackie”, Valley Zoo, Canada. Photo by staff photographer.



Figure 77. *Hylobates lar* (lar gibbon) (brown color phase) 15 month old female “Princess”, Cleveland Amory’s Black Beauty Ranch. Photo by Lee Theisen-Watt.



Figure 78. *Hylobates l. lar* (Malaysian lar gibbon) subadult male, Zoo Negara, Malaysia. Photo by staff photographer.



Figure 79. *Hylobates lar entelloides* (Thai lar gibbon) (born in northeast Thailand) adult female “Judy”, GCC. Photo by Alan Mootnick.



Figure 80. *Hylobates lar vestitus* (Sumatran lar gibbon) juvenile, Tapaktuan, Indonesia. Photo by Elsie Marshall.